

## Introduction

Parker introduced K4 (BSP) adapters in the late 1990s to address market requirements for OEM and replacement BSP adapters. These fittings are typically used as hose adapters on equipment designed and/or manufactured throughout Europe, especially equipment with ties to the UK, Scandinavia, the Netherlands, Spain and Italy. BSP cone adapters are similar in function to NPSM (07 Adapters) but with BSPP threads.

The metal-to-metal sealing is achieved by a single line of contact between the conical surface of the 60° cone seat and the corresponding surface of the ballnose or cone swivel, as shown in Fig. J1.

K4 adapters are manufactured in accordance with BS5200 standards. The 60° internal seat is designed for sealing with BSP hose swivel connections offered by many manufacturers. K4 adapters mate with Parker hose fitting series shown in Table J1.

Further enhancing the flexibility of the K4 adapter product line is the ability for the male BSP cone end of the straight fittings to also be used as a port adapter in ISO 1179-1 / DIN 3852 ports. This is accomplished with the addition of a bonded seal (often referred to as a “Dowty® seal”). This product feature is illustrated in Fig. J2.

It should be noted that Parker offers two very similar cone style BSPP adapters — P4 and K4. Parker’s K4 (60° cone, BSPP) fittings conform to BS5200, while P4 adapters conforms to JIS B8363 specification. **K4 Adapters, while very similar to JIS P4 cone style fittings, are not interchangeable.** See the [next page](#) for more information regarding the interchangeability of JIS and BS fittings.

## Design and Construction

**Construction:** Shaped K4 adapters are manufactured from a hot forged construction. Straight adapters are manufactured from cold drawn barstock.

**Threads:** The standard K4 products are manufactured with the thread forms listed below:

BSPP Threads: ISO 228-1 G  
 BSPT Threads: ISO 7/1, JIS B 0203  
 NPTF Threads: SAE J476, ANSI B1.20.3, FED-STD-H28/8

## Assembly and Installation

Please refer to [Section T](#) for the assembly and installation instructions for K4 fittings.

## Materials Specifications

K4 adapters are manufactured using state-of-the-art equipment and manufacturing technologies to assure construction integrity, highest strength, long service life and the highest quality. These materials are shown in Table J2.

Upon request, K4 fittings can be furnished in materials other than Parker’s standard steel offering.

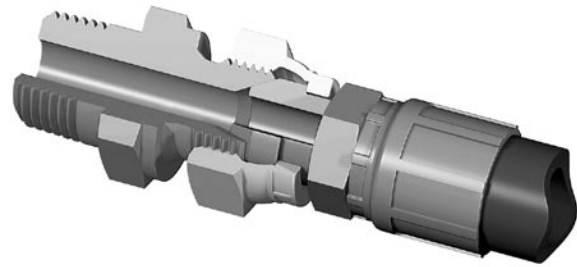


Fig. J1 – K4 Interface

Adapter Connection End	Mating Parker Hose Fitting Series
K4 / K46	D9/92, B1, B2, B4

Table J1 – Parker K4 Fittings Hose Adaptability

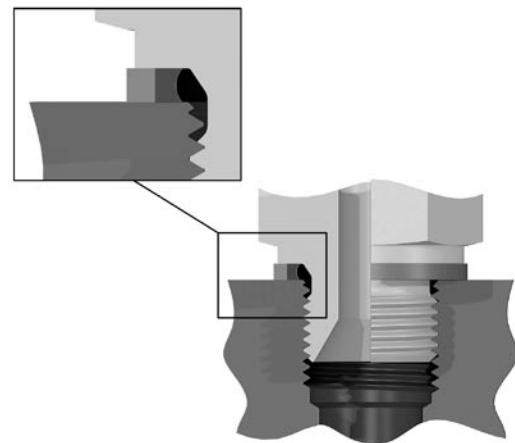


Fig. J2 – K4 End Used as a BSPP Port Adapter (in ISO 1179/ DIN 3852, Part 2 Port)

K4 BSP Adapters	Steel	
	ASTM	Type
Forged Bodies	A576	1214/1215
Bar Stock Bodies	A108	12L14

Table J2 – Standard Material Specifications for K4 Adapters

Dimensions and pressures for reference only, subject to change.